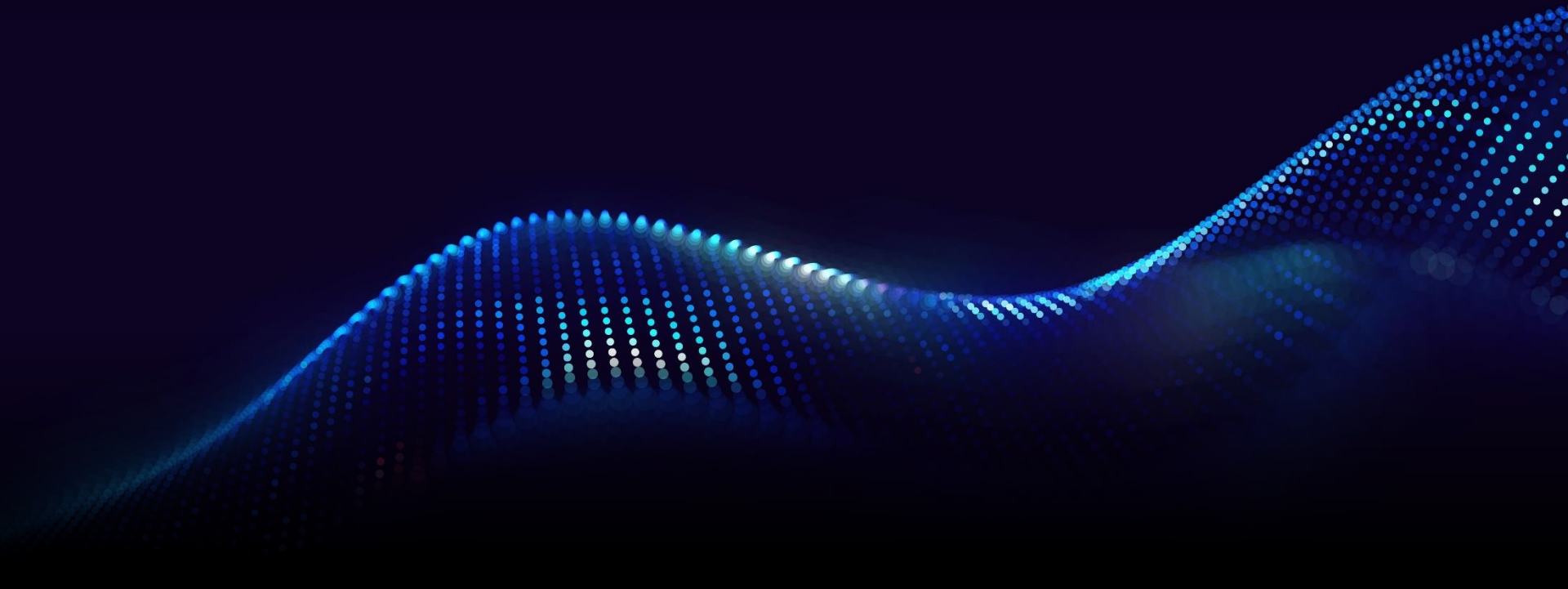


# **Cloud4C's Defender for Office 365 Deployment – Implementation Offering**



# Cloud4C Competencies on Azure

## 14 Advanced Specializations

Gold  
Microsoft  
Partner  
  
Azure  
Expert  
MSP  
  
**Renewed**



Analytics on  
Microsoft Azure  
(Azure)



Networking Services  
in Microsoft Azure  
(Azure)



Infra and Database  
Migration to Microsoft  
Azure (Azure)



Migrate Enterprise  
Apps to Microsoft  
Azure



Identity &  
Access Mgmt.



DevOps with  
GitHub on Microsoft  
Azure (Azure)



Microsoft Azure  
VMware Solution  
(Azure)



Kubernetes on  
Microsoft Azure  
(Azure)



SAP on Microsoft  
Azure (Azure)



Cloud Security  
(Security)



Microsoft Azure  
Virtual Desktop  
(Azure)



Threat Protection  
(Security)



AI Platform on  
Microsoft Azure



Build AI Apps on  
Microsoft Azure

## Advanced Specializations Future roadmap - 2025

- Hybrid Cloud Infrastructure with Microsoft Azure Stack HCI
- Data Warehouse Migration to Microsoft Azure

## Solution Partner

- Solutions Partner for Infrastructure (Azure)
- Solutions Partner for Digital & App Innovation
- Solutions Partner for Data & AI (Azure)
- Solutions Partner for Security
- Solutions Partner for Modern Work



Partner of the Year, UAE  
2022, Qatar 2020



Rising Star of the Year,  
APAC 2021



Security Partner of the  
Year (Malaysia 2023)



Finalist – Endpoint Management  
Trailblazer (MISA 2025)

# Cloud4C Defender for Office 365 Deployment Offering



Enterprise Email & Collaboration Protection

Advanced Phishing & BEC Prevention

URL & Attachment Threat Vetting

Identity-Linked Email Defense

DLP, Sensitivity & Compliance Integration

Automation & Playbook Orchestration

Operational Enablement & SOC Integration

## Proven Business Outcomes with Cloud4C

- Deployment completed within 3–4 weeks for enterprise Microsoft 365 environments
- Up to 65% reduction in phishing-related incidents after playbook-driven detection and automated containment
- Improved email filtering accuracy and lower false positives through tuned policies and detonation pipelines
- End-to-end compliance mapping to ISO 27001, HIPAA, PCI-DSS and GDPR with built-in reporting and audit artifacts
- Faster SOC incident triage and remediation via playbooks and Copilot-guided investigations
- Enterprise-proven delivery across BFSI, healthcare, manufacturing, government, telecom and retail



# Cloud4C Defender for Office 365 Deployment Methodology

- Catalog Microsoft 365 collaboration estate and telemetry sources
- Review identity & access posture (Entra conditional access, privileged accounts, mailbox permissions, forwarding and legacy auth risks).
- Map regulatory controls and compliance gaps (ISO 27001, HIPAA, PCI, GDPR) and identify high-risk users, domains and mail flows to prioritise initial use cases.



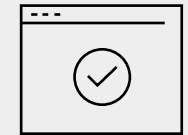
## Assessment & Posture Baseline



## Phased Tenant Rollout

- Pilot and phase onboarding of Defender for Office 365 features for selected business units.
- Validate mail routing and deliverability controls and secure third-party integration paths.
- Activate prioritized detection & automated containment playbooks (phishing, BEC, credential abuse) in pilot, then widen to full tenancy.
- Monitor pilot results, tune policies, and expand to production with minimal user disruption.

- Configure anti-phish, anti-impersonation, DLP, sensitivity labels, quarantine workflows and automated remediation actions.
- Perform validation: phishing simulations, URL/attachment detonation tests and false-positive tuning to ensure signal quality.
- Integrate Defender signals into Sentinel/SOAR, publish runbooks, and deliver analyst workshops + Copilot playbooks for operational handover.



## Policy Configuration, Validation & SOC Enablement



## Continuous Optimization & Governance Partnership

- Post-deployment tuning: refine detection logic, SafeLinks/SafeAttachments thresholds, DLP rules and automated containment workflows.
- Ongoing advisory and cadence: quarterly health reviews, threat-hunting, phishing posture reporting and targeted user remediation/awareness.
- Maintain compliance artifacts and audit reporting; update policies as Microsoft features and threat trends evolve.



# Why Cloud4C for Defender for Office 365 Deployment?

